



Cable Covers

- Golden willow tanned leather.
- Adjustable to fit 1-1/2" to 1-3/4" diameter.
- Nickel plated snaps every 6 inches.



Part No.	Size
CC-10	10'
CC-23	23'
CC-50	50'
CC-100	100'



Welding Cable

Welding Cable 600V

Description: Heavy duty arc welding cable is furnished with 30 ga (class K) flexible soft-drawn electrolytic copper. Kraft paper separates the special thermosetting compound from the bare copper. This cable resists oil, burning, abrasion, cold weather and is rated at 600 volts for intermittent use (up to three hours continuous use).

Construction: Rope stranded copper conductor, paper separator, insulated with oil-resistant compound. -40° C to +90° C

Sample Print: 4/0 +105C -50C 600V welding cable - reels are marked with sequential numbers each foot.

Uses: For connections for electrode holder and clamp to arc welder, bus, welding box or transformer. Also for certain 600 volt cable applications.



- EPDM insulation
- 30 AWG bare copper strands
- Kraft paper separator



Size AWG	Stranding	Nominal Finished O.D.	Approx. Weight (lbs./M ft.)
6	259/30	0.380"	140
4	374/30	0.400"	180
2	625/30	0.470"	265
1	778/30	0.500"	320
1/0	990/30	0.565"	405
2/0	1248/30	0.620"	485
3/0	1586/30	0.675"	620
4/0	2054/30	0.75"	790
250 MCM	2496/30	0.830"	965
350 MCM	3432/30	0.960"	1310
500 MCM	5054/30	1.200"	1960

Jacketed Type S00W

Heavy Duty Cord, 600V/90° C

U.L. File Number E 42543

C.S.A. File Number LL 24508

M.S.H.A. Number P-159-18

- Oil-resistant CPE jacket.
- Paper fillers.
- Color-coded, free-stripping EPDM insulation.
- Stranded bare copper conductor per ASTM B-174.
- Fully annealed.

* These ampacities are based on 30° C ambient temperature, per NEC Article #400.

**Not listed by U.L., but made to accepted commercial and manufacturing standards 1,000 reels and larger available.



Size AWG	Stranding	Nominal Insulation Thickness	Nominal Jacket Thickness	Nominal Outside Diameter	Current Carrying Capacity	Standard Package	Approx. Weight (lbs./1,000 ft.)
18/2	16/30	.030"	.060"	.345"	10 AMPS*	250' Ctn.	70
18/3	16/30	.030"	.060"	.365"	10 AMPS*	250' Ctn.	80
18/4	16/30	.030"	.060"	.390"	7 AMPS*	250' Ctn.	95
16/2	26/30	.030"	.060"	.370"	13 AMPS*	250' Ctn.	80
16/3	26/30	.030"	.060"	.390"	13 AMPS*	250' Ctn.	95
16/4	26/30	.030"	.060"	.420"	10 AMPS*	250' Ctn.	115
16/5	26/30	.030"	.080"	.495"	8 AMPS*	250' Reel	160
12/3	65/30	.045"	.095"	.595"	25 AMPS*	250' Ctn.	225
12/4	65/30	.045"	.095"	.650"	20 AMPS*	250' Ctn.	270
10/3	104/30	.045"	.095"	.660"	30 AMPS*	250' Ctn.	290
10/4	104/30	.045"	.095"	.715"	25 AMPS*	250' Ctn.	355
**8/3	133/29	.06"	.110"	.855"	40 AMPS*	250' Reel	485
**8/4	133/29	.06"	.125"	.780"	35 AMPS*	250' Reel	670
**6/3	133/27	.06"	.125"	.980"	55 AMPS*	250' Reel	700
**6/4	133/27	.06"	.140"	1.090"	45 AMPS*	250' Reel	875

Respirators



Disposable Respirators

Disposable Particulate Respirator

- N95 approved
- Adjustable Nose Clip
- Soft Nose Foam
- Patented Filter Media

Part No. 1111 - 20/box



JACKSON SAFETY* Particulate Respirators

JACKSON SAFETY* Particulate Respirators deliver the protection you expect and the comfort you need for all-day wear. Durable, woven elastic ultrasonically bonded head straps help keep the respirators securely in place without pulling or breaking. And our nose pad has soft foam for added comfort.

- Highly visible, color-coded, woven head straps.
- Comfortable soft nose foam pad.
- NIOSH N95.
- Ultrasonically bonded head straps.
- Latex-Free.



Part No. 64260

M10 Dual Respirator

Part No.	Description	Qty/Pkg	Pkg/Cs	Qty/Cs
64260	Dual Respirator, N95	10	8	80

M10 Particulate Respirator

Part No.	Description	Qty/Pkg	Pkg/Cs	Qty/Cs
64230	without valve; N95	20	8	160
64240	with valve; N95	10	8	80

M20 Particulate Respirator

Part No.	Description	Qty/Pkg	Pkg/Cs	Qty/Cs
64410	with valve; R95	10	8	80
64420	with valve; P95	10	8	80

M30 Particulate Respirator

Part No.	Description	Qty/Pkg	Pkg/Cs	Qty/Cs
64520	with valve; N99	10	8	80

Cowhide Comfort® Clothing

Offers maximum protection under the most rugged conditions. The Comfort® line of welding clothing is made with high quality leather to ensure maximum protection and comfort. Unlike high temperature synthetic fabrics, cowhide leather is strong, yet flexible and resists cuts, sparks and slag at an economical price.

Jackets

30" Leather Welders Jacket

- Non-reflective, reinforced snap buttons
- Adjustable stand-up, soft rolled collar for added comfort
- Scribe pockets on both sleeves
- Take-up straps for the waist
- Adjustable wrist snaps
- Inside pocket to protect belongings
- All seams double lock stitched
- Double snaps at neck
- Stress points are rivet reinforced
- Sewn with Kevlar®



Part No. 710-1: S, M, L, XL, XXL, XXXL, XXXXL

Cape Sleeves

Leather Cape Sleeves

- Non-reflective, reinforced snap buttons
- Adjustable stand-up, soft rolled collar for added comfort
- Scribe pockets on both sleeves
- Adjustable wrist snaps
- All seams double lock stitched
- Stress points are rivet reinforced
- Sewn with Kevlar®



Part No. 710-6: S, M, L, XL, XXL, XXXL, XXXXL, 5XL

Leather Sleeves

23" Leather Sleeve

- Sleeve covers arm from shoulder to wrist
- Non-reflective, reinforced snap buttons
- Adjustable wrist snaps
- Adjustable neck straps
- Sewn with Kevlar®



Part No. 710-12

18" Leather Sleeve

- Non-reflective, reinforced snap buttons
- Adjustable wrist snaps
- Adjustable arm straps
- Sewn with Kevlar®



Part No. 710-14

Aprons

Bib Apron

- Long front body protection
- Adjustable waist strap with quick release buckle
- Adjustable crossed back straps
- 2 front bib pockets
- Stress points are rivet reinforced
- Sewn with Kevlar®

Part No. 710-22: 24" x 36"

Part No. 710-23: 24" x 48"



Part No. 710-23

Split Leg Bib Apron

- 24" x 48" Split leg apron
- Adjustable waist and leg straps with quick release buckles
- Adjustable crossed back straps
- Long front body protection
- 2 front bib pockets
- Stress points are rivet reinforced
- Sewn with Kevlar®

Part No. 710-24



Part No. 710-24

Waist Apron

- 24" x 24"
- Adjustable waist strap
- Quick side release buckle
- Sewn with Kevlar®

Part No. 710-21

Detachable Bibs

Leather Bib

- Detachable long front body protection
- Adjustable waist strap with quick release buckle
- Not interchangeable with 910 bibs
- Sewn with Kevlar®

710-7-14: 14" Bib

710-7-20: 20" Bib

710-7-26: 26" Bib



Rod Bags

- Double leather bottom
- Belt loop
- Holds 5 lbs. of electrodes

Part No. WC-38

- Oak tanned sole leather
- Hard wood bottom
- Belt loop
- Holds 10 lbs. of electrodes plus chipping hammer

Part No. WC-40

- Soft golden willow tanned leather
- Double bottom
- Holds 5 lbs. of electrodes
- Belt loop and quick swivel spring clip

Part No. WC-41



Part No. WC-41

Flame Resistant Clothing

Flame Resistant Clothing

Comfort® Flame Resistant (FR) clothing is made from 9 oz., 100% visual green cotton. It is cooler, lighter and less expensive than leather. FR Clothing is excellent for warm weather or indoor use where there is light exposure to sparks and spatter. This fabric will maintain its flame resistance through many launderings. Larger sizes available upon request.

Cotton Sateen Full Jackets

- Rolled collar with inside chest pocket
- Non-reflective snap closure and snaps on wrists

Part No. 940-1: (30") S, M, L, XL, XXL, XXXL, XXXXL, 5XL

Part No. 940-2: (26") S, M, L, XL, XXL, XXXL, XXXXL, 5XL

Cape Sleeves

- Cape sleeve with collar, 9" front, 6" back

Part No. 940-6: S, M, L, XL

Sleeves

Part No. 940-18: 18" Sleeve with elastic top and snaps at wrist

Part No. 940-19: 18" Sleeve with elastic at both ends

Part No. 940-23: 23" Sleeve with adjustable neck strap and wrist straps.

Bibs

Part No. 940-7: Detachable 14" bib

Part No. 940-8: Detachable 20" bib



Part No. 940-1



Part No. 940-6 Cape sleeve

Part No. 940-8 Bib

Cotton Sateen Aprons

- Split bib apron with adjustable neck, waist, and leg straps
- Reinforced with leather at all stress points
- Surged and stitched seams to prevent raveling
- All aprons come with adjustable waist ties and all bib aprons come with adjustable neck ties

Part No. 940-21: 24" x 24" waist apron

Part No. 940-22: 24" x 36" bib apron

Part No. 940-24: 24" x 48" split bib apron

Part No. 940-25: 24" x 42" split bib apron

Part No. 940-26: 24" x 36" split bib apron



Part No. 940-22



Part No. 940-26

Protective Clothing- Flame Resistant

Lab Coats

- 45" overall length.
- One piece back with inset sleeves.
- Metal snap front closure.

Part No. 940-545: M, L, XL, XXL, XXXL

Coveralls

- One piece back, two breast, two front, and two hip pockets.
- Snap front closure.

Part No. 940-641: S, M, L, XL, XXL, XXXL, XXXXL

Trousers

- Two back patch pockets and two slash front pockets.
- Brass zipper fly.
- Specify waist and inseam.

Part No. 940-610

Clothing Size Chart	
S	36" - 38"
M	40" - 42"
L	44" - 46"
XL	48" - 50"
XXL	52" - 54"



Part No. 940-545



Part No. 940-641



Part No. 940-610

Winter Liners



- Yellow twill shell with fleece lining.
- One universal size.
- Velcro chin strap.
- Three suspension tabs.
- Flame retardant.

Part No. 930-1



- Heavy blue twill shell.
- Velcro chin strap.
- Three suspension tabs.
- Flame retardant.

Part No. 930-12



- Blue quilted material with fleece lining.
- Velcro chin strap.
- Three suspension tabs.
- One universal size.

Part No. 930-15



- Blue twill shell, with fleece lining.
- Velcro chin strap.
- Three suspension tabs.
- One universal size.
- Flame retardant.
- 930-18 has pile lining.

Part No. 930-16

Part No. 930-18- pile lining



- Heavy weight with fleece lining.
- Velcro closure, elastic around face.
- One universal size.
- Non flame retardant.

Part No. 930-30



- Acrylic/Polyester w/sherpa lining on inside.
- Neck and shoulder protection.
- Velcro closure.
- One universal size.

Part No. 930-40



- Heavy blue twill with fleece lining.
- Long nape, front neck flap and nose flap.
- Velcro neck and nose strap.
- One universal size.
- Flame retardant.

Part No. 930-60



- 100% cotton outer shell, polyester fleece lining.
- Two layer.
- Long nape length.
- Stars and stripes design.
- Non-Flame retardant.

Part No. 930-GL4X



- Winter liner for safety caps and hats.
- One universal size.
- Non flame retardant.
- Washable nylon.
- Available in blue, orange or red.

Part No. 930-50-BLU

Part No. 930-50-ORG

Part No. 930-50-RED

Sweatbands



- Soft grain leather sweatband.
- Snaps over headgear.

Part No. 912-81



- Sheepskin sweatband.
- Two snaps fit on headgear.

Part No. 912-82

Premium Protective Products

Thumb Types

Straight Thumb

Design that points vertically from the wrist and useful in those areas where gripping is important.



Wing Thumb

An angled thumb that allows good flexibility. Contains no seam between palm and thumb area.



Keystone Thumb

Highly flexible thumb that is stitched separately into the palm area, usually with an extra layer of leather.



Cuff Styles

Knit Wrist

Found on most woven and knit cotton gloves. Comfortable, snug fit that keeps dirt out of gloves.



Turned Cuff

Leather edge of cuff is turned up inside glove and hemmed to provide extra wear and comfort.



Safety Cuff

Can easily be shaken off without using the other hand—a safety precaution. Its main purpose is to provide protection to the wrist area.



Shirred Cuff

Used where easy on and off applications are required. A shirring closure across the back of the lower wrist area is used to hold the glove snugly on the hand.



Gauntlet Cuff

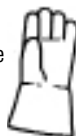
A longer cuff typically at least 4" long which protects the wrist and forearm.



Glove Pattern

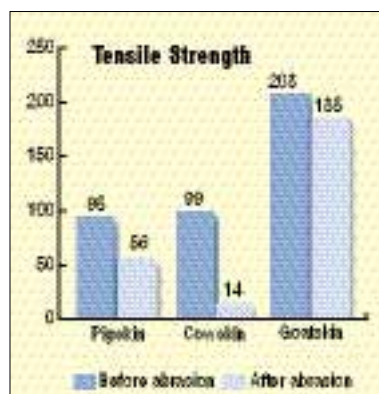
Gunn Cut

Pattern includes a seam across the base of two middle fingers on palm side.



Clute Cut

Identified by the absence of a seam across the base of two middle fingers on palm side.



Premium Protective Products

Comfort® gloves are quality, heavy duty products. The tough but flexible materials offer exceptional hand protection and superior performance against cuts, abrasions and temperature extremes. Comfort® offers a wide variety of premium gloves to meet specific applications on the job site.

Goatskin Superiority

- Lanolin oil is naturally present in goatskin. Our unique tanning gives you a supersoft glove that increases comfort while reducing hand fatigue.
- Naturally soft leather means dexterity, tactility, and close touch for those sensitive jobs, such as TIG welding.
- Goatskin durability is renowned! Independent lab tests show that when compared to cow and pig glove leather, goatskin is at least twice as durable than both before abrasion, three times more durable than pig after abrasion, and 10 times more durable than cow after abrasion.
- Tests performed by an independent lab using 80 grit sandpaper after 1600 abrasion cycles.

Leather Terminology

Side Split- The portion of the hide that covers the rib area of the animal. Stronger and more uniform than shoulder leather with fewer imperfections such as scars and weak fibers.

Shoulder Split- The portion of the hide from the neck and shoulder of the animal. Fibers tend to be weaker than side split.

Belly Split- Comes from the belly portion; it is the least dense and most economical.

Grain Leather- Top portion of the hide, smooth, soft and flexible. Used primarily when dexterity is required.

Materials

Cowhide- Offers maximum protection under the most rugged conditions.

Goatskin- The natural presence of lanolin in goatskin makes it supersoft and flexible. The pliable goat leather creates dexterity and increased durability.

Sheepskin- Soft, durable leather which provides comfort in needs of dexterity and sensitivity.

Cottons- Usually knitted or woven fabrics. They provide comfort wear for light to medium duty work. Woven fabrics offer better abrasion resistance and barrier protection against grime. Jersey fabric stretches to fit the hand.

* Designs and/or specifications of gloves are subject to change without notice.

Leather Palm, Cowhide & Goat Work Gloves

Leather Palm Work Gloves



- Quality shoulder/ belly split cowhide.
- Starched safety cuff.

Part No. 1210: L

Available in Economy Patch Palm.

Part No. 1201: L



- Select shoulder split cowhide.
- Plasticized safety cuff.

Part No. 1220: L



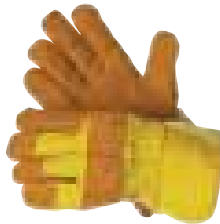
- Select shoulder split cowhide.
- 2.5" rubberized safety cuff.

Part No. 1230: L



- Premium side split cowhide.
- Heavy safety cuff.

Part No. 1420: L



- Premium side split brown cowhide.
- Yellow fabric back.
- Heavy safety cuff.

Part No. 1610: L



- Premium side split cowhide.
- Side split reinforced palm and finger.
- Heavy safety cuff.

Part No. 1421: L

Work Gloves



- Winter work glove.
- Premium side split cowhide.
- Fully thermo-lined including cuff.
- Superior warmth and comfort.
- Fabric back.
- Heavy safety cuff.

Part No. 1242: L, XL



- Premium goat grain leather.
- Heavy safety cuff.

Part No. 1910T: L



- Premium leather palm.
- Side split cowhide.
- P.E. safety cuff.
- Full leather back.
- Gunn pattern.
- Wing thumb

Part No. 1243: L



- Full leather back work glove.
- Heavy select side split cow leather.
- Sewn with super-strong heat resistant Kevlar® thread.

Part No. 1717: XL

Cotton, Logo, & Driver's Gloves

Cotton Gloves



- 100% lightweight cotton.
- Unhemmed.
- One size fits all.

Part No. 4100



- Premium brown jersey glove.
- Knit wrist protection.
- Multi-purpose glove.
- Heavy duty.
- One size fits all.

Part No. 5001



- Plastic dot glove.
- Knit wrist protection.
- Cotton canvas.
- Superior grip.

Part No. 5120: L

Logo Gloves



- Specify which color and logo per dozen gloves ordered.
- Dodge®, Ford®, Chevrolet®, Professional Bull Riders™, John Deere®, Nascar®, NFL™, and NCAA® all available.
- One size fits all.
- Factory drop ship only.

Part No. WA0022

Drivers Gloves



- Pig grain.
- Heatrac® insulated.
- Keystone thumb.

Part No. 1366: XL



- Quality side split cowhide.
- Unlined.

Part No. 2010: S, M, L, XL



- Premium goat grain leather.
- Select shoulder split cowhide.
- One piece back.
- Unlined.

Part No. 2020T: M, L, XL



- Premium shock absorbent goat grain leather.
- Reinforced suede goatskin palm.
- Unlined.

Part No. 2040T: S, M, L, XL



- Premium goat grain leather.
- Unlined.

Part No. 2030T: S, M, XL

High Temperature Gloves & Mitten



- 14" Clute cut jumbo size heat glove.
- Wool/felt lined.
- Wing thumb.
- Treated fiberglass material.

Part No. 925-15

Same as 925-15 (above) constructed with a blended Kevlar® fabric.

Part No. 960-15



- 14" Clute cut glove.
- Leather reinforced palm & thumb.
- Wool/felt lined.
- Wing thumb.
- Treated fiberglass material.

Part No. 925-17



- 14" Gunn cut fully welted glove.
- 100% wool lined to wrist.
- Aluminized leather, one-piece back.
- Wing thumb.
- Protects against reflected heat.

Part No. 925-72



- 14" length reversible mitten.
- Provides "double wear" life.
- Wool/felt lined.
- Treated fiberglass material.

Part No. 925-13



- Kevlar® brand fiber.
- Cotton inside.
- 7-gauge knit with palm coat.

Part No. 9368: S, L

Premium Hot Mill & Welding Gloves

Premium Hot Mill Gloves



- 24 oz.
 - Band top.
 - Nap out.
 - 2" cuff.
- Part No. 6210:** L



- Gauntlet cuff.
 - 24 oz.
 - Nap out.
 - 4.5" cuff.
- Part No. 6220:** L



- Band top.
 - Burlap lined.
 - 32 oz.
 - Heavy duty.
 - Nap out.
 - 2" cuff.
- Part No. 6230:** L



- Gauntlet cuff.
 - Burlap lined.
 - 32 oz.
 - Heavy duty.
 - Nap out.
 - 4.5" cuff.
- Part No. 6240:** L

Welding Gloves



- Blue shoulder split cowhide.
 - Reinforced palm.
 - Fully welted finger tips.
 - Complete sock lined.
- Part No. 1413T**



- Rust, 18" cowhide, sewn with Kevlar®.
 - Protects forearm to elbow.
 - Reinforced palm, Velcro® strap cuff.
 - Airfoam® insulated back.
- Part No. 1468**



- Split cow welder gloves.
 - Select shoulder leather.
 - Sewn with Kevlar®.
 - Reinforced straight thumb.
 - Black cotton drill cuff lining.
- Part No. 4320**



- Gray quality shoulder/ belly split cowhide.
 - Full Fleece palm lining.
- Part No. 4910B:** L



- Premium shoulder brown split cowhide.
 - Reinforced thumb strap protection.
 - Sewn with Kevlar®.
 - Full palm lining with foam back.
 - Heavy duty.
- Part No. 4930T:** L



- Side split cowhide.
 - Reinforced thumb guard and strap protection.
 - Sewn with Kevlar™.
 - Gunn pattern.
 - Wing thumb.
 - Fully welted, turned cuff.
 - Extra heavy duty foam and fleece lining.
- Part No. 4970T**

Welding Gloves



- 14" Gunn cut welding glove.
- Continuous one piece back.
- Synthetic lining.
- Fully welted.
- Wing thumb and turned cuff.

Part No. 920-10



- 13" Gunn cut glove.
- Continuous one piece back.
- Synthetic lining.
- Thumb, index finger and outside seam welted.
- Wing thumb and turned cuff.

Part No. 920-11



- Clute cut, flame retardant terry cloth glove.
- Designed specifically for welders.
- Protects against heat, cuts and abrasions.

Part No. 920-11



- Ladies welding glove.
- Blue 12" Gunn cut.
- Synthetic lining.
- Fully welted.
- Wing thumb and turned cuff.

Part No. 920-24



- 14" Clute cut welding glove.
- Continuous one piece back.
- 100% wool lined to wrist.
- Fully welted.
- Wing thumb and turned cuff.

Part No. 920-5



- 13" Gunn cut welding glove.
- Continuous one piece back.
- Synthetic lining.
- Thumb and index finger welted.
- Wing thumb and turned cuff.

Part No. 920-60



- Blue 14" Gunn cut welding glove.
- Continuous one piece back.
- Synthetic lining with fully welted lock stitch construction.
- Wing thumb and turned cuff.

Part No. 921-5



- Black 14" Gunn cut glove.
- Aluminized leather one-piece back and thumb to protect against direct and reflected heat.
- Cowhide palm, fully welted.
- Wing thumb and turned cuff.

Part No. 925-70



Glove Accessories



Back Hand Pads

- Protects the back of welder's glove from weld spatter and high radiant heat.
- Increases the life of your glove.
- Helps you to weld longer when exposed to high radiant heat.

Part No. 920-75- Single layer protection

Part No. 920-85- Double layer protection



WILSON* Aluminized Weld-O-Glass Back Hand Pad

Protects the back of welder's glove from weld spatter and high radiant heat. Increases the life of your glove. Helps you to weld longer when exposed to high radiant heat. Provides good mobility for gloved hand. Double layer protection—Wilson Weld-O-Glass 2600 AMA on top and a high temperature glass fabric on the bottom. Sewn and riveted for added durability.

Part No. BHP06



MIG/TIG Gloves

MIG / TIG Gloves



- Premium goat grain leather.
- Premium select shoulder split cowhide safety cuff.
- Straight thumb.
- Clute cut.

Part No. 4510: M, L, XL



- Extremely soft suede.
- Premium select shoulder split cowhide safety cuff.
- Sewn with Kevlar®.
- Straight thumb.
- Gunn cut.

Part No. 4520T: M, L, XL



- Premium goat grain leather.
- Premium select shoulder split cowhide safety cuff.
- Sewn with Kevlar®.
- Straight thumb.
- Gunn cut.

Part No. 4560T: S, M, L, XL



- Premium goat grain leather.
- Premium shoulder split cowhide gauntlet cuff.
- Sewn with Kevlar®.
- Wing thumb.
- Turned cuff.
- Heavy duty.
- Gunn cut.

Part No. 4570T: S, M, XL



- Premium sheep leather.
- Premium shoulder split cowhide gauntlet cuff.
- Sewn with Kevlar®.
- Wing thumb.
- Turned cuff.
- Heavy duty.
- Gunn cut.

Part No. 4580T: M, L

TIG Gloves



- Gunn cut TIG welding glove.
- Made from full grain, light weight pigskin.
- 4" cuff, straight thumb.
- Unlined.

Part No. 920-16



- Gunn cut TIG welding glove.
- Light weight, soft, pliable.
- Cork colored deerskin.
- Wing thumb.
- Unlined.

Part No. 920-17: S, M, L, XL



- Gunn cut TIG welding glove.
- Pearl grain sheepskin palm and straight thumb.
- Buck tan cowhide back and 2-1/2" buck tan cuff.
- Unlined.

Part No. 920-18

Part No. 920-18LHO - left hand only



- Gunn cut TIG welding glove.
- Light weight, extra soft, pliable.
- Pearl Cape-skin leather.
- Wing thumb.
- Unlined.

Part No. 920-19: S, M, L, XL

Welding / Protective Blankets and Roll Goods

Blanket/ Roll Good	Material	Temperature		Suggested Applications					
		Upper Limit	Continuous Operating	Drop Cloths	Slag Protection	Vertical Spark	Heat Containment Curtains	Welding Blankets	Welding Curtains
OKI-GLASS	100% Fiberglass	1000° F	1000° F	•		•	•	•	•
OKI-VGLASS	Vermiculite coated	1200° F	1000° F	•	•	•	•	•	•
OKI-NeoGuard	Acrylic coated	1000° F	225° F*	•	•	•		•	•
OKI-SIL	Silica	3000° F	1800° F	•	•	•	•	•	•

* A limit of Neoprene with acrylic

Blankets

Use to protect equipment near hazardous operations such as welding or grinding.

- Heavy duty hemmed on four sides.
- Standard grommets on 24" centers.

Note: Blanket sizes may vary up to 3" in width and height.

OKI-GLASS

Woven from 100% fiberglass yarns, OKI-GLASS fabrics offer excellent protection against vertical spark and slag when used as drop cloths and heat containment curtains in light-to-medium-duty welding applications.

- Heat cleaned.
- Continuous protection to 1000° F (538° C).
- 100% woven textured fiberglass.
- Durable – ideal for applications where fabric must be moved frequently.
- Strong, flexible and versatile.
- Abrasion resistant.
- Low irritation factor.
- Resistant to most chemicals.
- Melting point: 1000° F



Weight	Blankets*		Roll Goods	
	Part No.	Size	Part No.	Size
18 oz.	918-18-9	3' x 3'	918-1840	40" x 50 yd.
	918-18-36	6' x 6'	918-1860	60" x 50 yd.
	918-18-48	6' x 8'		
	918-18-100	10' x 10'		

*Blankets include grommets on 24" centers on 4 sides except 3' x 3' which are on 4 corners only.

OKI-VGLASS

Black vermiculite-coated OKI-VGLASS boosts heat resistance by more than 20%. OKI-VGLASS provides outstanding slag protection in a variety of medium-duty welding applications; its enhanced temperature resistance characteristics make it an ideal fabric for heat treating, heat containment curtains, and drop cloths.

- Remains stable to 1200° F (648° C).
- Better temperature resistance than plain fiberglass.
- Superior abrasion resistance.
- Safe and cost-effective.
- Blankets and curtains for stress relief and heat containment available from stock, or in custom sizes and configurations per your specifications.



Weight	Blankets*		Roll Goods	
	Part No.	Size	Part No.	Size
26 oz.	951-26-9	3' x 3'	951-2640	40" x 50 yd.
	951-26-36	6' x 6'	951-2660	60" x 50 yd.
	951-26-48	6' x 8'		

*Blankets include grommets on 24" centers on 4 sides except 3' x 3' which are on 4 corners only.

OKI-NeoGuard

Choose neoprene with acrylic-coated NeoGuard for extra durability. Woven from 100% fiberglass yarns, NeoGuard fabrics offer excellent protection against vertical spark and slag when used as drop cloths and heat containment curtains in light-to-medium-duty welding applications.

- Gold, 100% woven textured fiberglass fabric with acrylic coating.
- Fabric remains stable to 1000° F; acrylic coating is limited to 225° F continuous.
- Made tough to last long in high traffic areas or where fabric must be moved frequently.



Weight	Blankets*		Roll Goods	
	Part No.	Size	Part No.	Size
24 oz.	916-24-9	3' x 3'	916-2440	40" x 50 yd.
	916-24-36	6' x 6'	916-2460	60" x 50 yd.
	916-24-48	6' x 8'		
	916-24-100	10' x 10'		
	916-24-144	12' x 12'		

*Blankets include grommets on 24" centers on 4 sides except 3' x 3' which are on 4 corners only.

OKI-SIL

The ultimate in high temperature welding protection! With a melting point of 3000° F, OKI Silica fabrics offer welders protection in applications from heat treating to stress relieving to drop cloths over equipment and floors.

- Continuous protection to 1800° F (1000° C).
- Melting point: 3000° F (1649° C).



Weight	Blankets*		Roll Goods	
	Part No.	Size	Part No.	Size
18 oz.	915-18-9	3' x 3'	915-1836	36" x 50 yd.
	915-18-36	6' x 6'		
	915-18-48	6' x 8'		

*Blankets include grommets on 24" centers on 4 sides except 3' x 3' which are on 4 corners only.



Welding Blanket / Tarps / Tarp Straps / Flagging Tape



Silkglass™ Welding/Fire Blanket

Part No. 69661 - 26 oz. 6' x 6'

Part No. 69662 - 52 oz. 6' x 6', extra heavy duty

Part No. 69682 - 26 oz. 6' x 8'



Blue Polytarps

- Heavy-duty double laminated coating.
- Extra strength weave.
- Sun and fade resistant.
- Rust proof grommets.
- No leaks, no tears.
- Heat sealed seams.
- Grommets every 3 feet.
- Rope reinforced hem.
- Color: blue.



Part No.	Cut Size
MT68	6' x 8'
MT810	8' x 10'
MT912	9' x 12'
MT1012	10' x 12'
MT1216	12' x 16'

Part No.	Cut Size
MT1620	16' x 20'
MT2020	20' x 20'
MT2030	20' x 30'
MT2040	20' x 40'
MT3040	30' x 40'



Rubber Tarp Straps

- Super strength compounded rubber lasts longer.
- Ozone, weather, wear, tear and abrasion resistant.
- Resists deterioration in outdoor environments.
- Reinforced ends.
- Cadmium plated sturdy steel "s" hooks.



Part No. RS-21

Part No.	Length
RS-21	21"
RS-31	31"
RS-41	41"



Flagging & Barricade Tape

- High visibility colors.
- Durable plastic remains pliable in cold weather.
- Use to identify boundaries for surveying work, recreational applications, and for identifying personal possessions in busy areas.

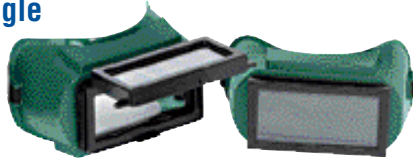


Part No.	Length	Description
76-0600	3" x 500' yellow	Reinforced Construction Grade CAUTION/CUIDADO
77-0201	3" x 200' yellow	CAUTION/CUIDADO
77-1001	3" x 1000' yellow	CAUTION
77-1004	3" x 1000' red	DANGER
77-002	1" x 200' orange	FLAGGING

Welding Goggles

Lift/Fixed Front Goggle

This soft polyethylene frame goggle has 6 vents that assure ample ventilation. Fits easily over prescription glasses. Supplied with a 2" x 4-1/4", shade 5 lens protected by a clear cover lens. A magnifier lens can be placed in the unit in the rear of the colored protective lens.



- Meets requirements of ANSI Z87.1
- Part No. 932-12** fixed front lens
Part No. 932-13 lift front lens

Lift/Fixed Front 50 mm Goggle

The soft opaque vinyl frame comfortably molds to the face and fits easily over spectacles. Six baffled and screened vents to prevent fogging. Features a 50 mm lift front lens, affording dual purpose usage and added safety. Complete with shade 5 lens.



- Meets requirements of ANSI Z87.1
- Part No. 932-11** fixed front lens
Part No. 932-15 lift front lens

Visitor Spectacle

- Advanced temple design for extraordinary comfort.
- High impact protection.
- Optically correct spherical lens.
- Fits over most prescription spectacles.
- Strong double hinged temple.
- Excellent ultraviolet protection.
- Meets requirements of ANSI Z87.1.



Part No. 1410S

Fixed Front Goggles

A streamlined one-piece hard frame welding cover goggle. Spring loaded lens retainer for quick replacement of lens. Headband slots are an integral part of the frame thereby strengthening both frame and slots. The 932-16 is the answer to the demand for a hard-frame welding goggle at a low price. Complete with shade 5 lens.



- Meets requirements of ANSI Z87.1
- Part No. 932-16**

Cup Type Goggle - Snug Fit-Vented Cup

These goggles combine comfortable snug fit with wide vision. Cups are molded of flame resistant plastic. Elastic headband is adjustable. Welders goggles are supplied with 50 mm shade 5 lens.



- Meets requirements of ANSI Z87.1
- Part No. 932-44**

Slip-On Side Shields

These inexpensive side shields provide side protection against mild nuisance hazards. They fit most standard spatula type temples and may be easily and quickly installed or removed.

- DOES NOT meet ANSI requirements for side shield protection.



Part No. 934-60

Mag-Safe™ Magnifying Safety Glasses

- All Mag-Safe™ magnifying safety glasses meet or exceed ANSI Z87.1
- ANSI Z87.1 requires wearing safety glasses under any style welding helmet.
- Diopters available: 1.25, 1.50, 1.75, 2.00, 2.25, 2.50, 2.75, 3.00

Bifocal Magnifiers

- Reduce eye strain.
- Dielectric - no metal parts.
- Scratch resistant.
- Side shields for added protection.

Full Lens Magnifiers

- For use under welding helmet.
- Allows vision through entire viewing area of large welding filters.
- Eliminates distortion caused by flat magnifiers



Part No. CC150

New Style Bifocal Magnifiers

Part No.	Diopter
CC150	1.50
CC175	1.75
CC200	2.00
CC225	2.25
CC250	2.50
CC300	3.00

Bifocal Magnifiers

Part No.	Diopter
BF150	1.50
BF200	2.00
BF250	2.50

Full Lens Magnifiers

Part No.	Diopter
MS125	1.25
MS150	1.50
MS175	1.75
MS200	2.00
MS225	2.25
MS250	2.50
MS300	3.00

Industrial Soft Frame Goggles

For protection against flying chips, particles, chemicals, etc. Ventilation provided by perforations in frame with thru-lens ventilation gives up to 40% more air flow.

- Polycarbonate lens in choice of frame and lens colors
- Elastic headband
- Meet Requirements of ANSI Z87.1



Part No. 932-1

Part No.	Frame	Lens
932-1	Perforated	Clear
932-1F	Perforated-fog less	Clear
932-3	Perforated	Green
932-4	Hooded vent	Clear
932-30	Chemical goggle	Clear
937-70	Replacement band 4/pk	N/A

Visors

Multi-Purpose Faceshields

The multi-purpose faceshield combines clear anti-fog window with a flip-down IR window, providing uninterrupted protection for various operations. The shield curves naturally to fit facial contours—ensuring reliable protection from splash, particles, and flying debris. Ratchet headgear suspension allows user to adjust size and tighten at the turn of a knob.

- FIRST EVER combination clear anti-fog window w/ Shade IR flip-up lens.
- UV absorbing polycarbonate windows.
- Supplied with a ratchet headgear providing a perfect fit every time.
- Meets ANSI Z87.1-2003 Standards.
- CUL Certified to meet CAN/CSA Z94.3 Standards.

Faceshield w/ Flip-Up Shade Shade 8 IR

- Only faceshield in the market that meets ANSI Z49.1 Standards for plasma cutting.

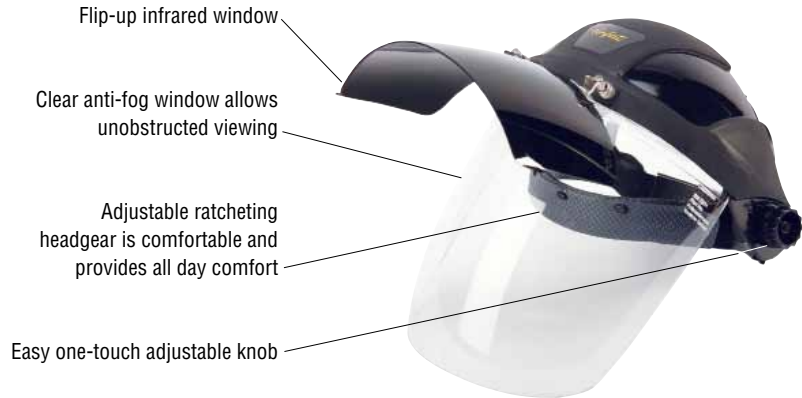
Part No. MPH-F8

Shade 6 IR and 5 IR

- FIRST EVER combination clear anti-fog window w/ an infrared shade flip-up lens for use in grinding, cutting and brazing.

Part No. MPH-F6- Shade 6 IR

Part No. MPH-F5- Shade 5 IR



Aluminum Bound Polycarbonate Faceshield Window 8" x 15.5" x .040"

- Aluminum bound provides extra durability.
- Chemical splash resistant.
- Non-glare finish allows for high clarity.
- Extreme impact strength.

Part No. RV-CL - Clear Replacement Visor

Part No. LF-SH5 - Shade 5 Replacement Visor

Part No. LF-SH6 - Shade 6 Replacement Visor

Part No. LF-SH8 - Shade 8 Replacement Visor

Part No. ORHG - Replacement headgear (only)

⚠ Caution: This product is NOT suitable for protection against x-rays, gamma rays, high energy particulate radiation, lasers or masers. You should inspect this faceshield frequently and immediately replace worn, pitted, scratched or damaged parts. You should give this caution to any user of this faceshield.

Face Shield Replacement Visors

All Comfort® Line replacement visors are made from the highest quality, optically clear material and are available in clear and dark green. This visor eliminates the guesswork in selecting the proper style, size and type. Comfort® Line has the capability and know-how to manufacture special visors and hood windows to fit almost any head gear, cap attachment and sandblaster hoods.

- Fits universal hole pattern.
- Meet ANSI Z87-1



Part No. 932-824BDG

Universal Visor Crown and Ratchet Headgear

- Unique toggle design makes assembly quick and easy.
- ABS crown is balanced and lightweight.
- Extreme impact strength.
- Soft brow pad on headgear for all-day comfort.
- Supplied with a ratchet headgear provides a perfect fit every time.
- Meets ANSI Z87.1-2003 Standards.
- CUL Certified to meet CAN/CSA Z94.3 Standards.



Part No. UNI-RH

Clear Anti-Fog Faceshield

- Clear anti-fog window for grinding.
- Available with hardhat attachments.

Part No. MPH-CL



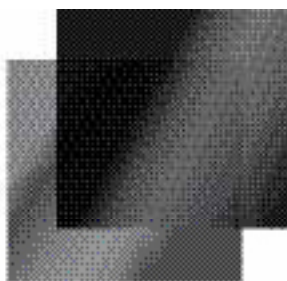
Part No.	Size	Color	Binding
932-804BCL	8" x 12" x .040"	Clear	Yes
932-804UCL			No
932-824BDG	8" x 12" x .040"	Dark green	Yes
932-824UDG			No
932-344BCL	9" x 15.5" x .040"	Clear	Yes
932-344UCL			No
932-354BLG	9" x 15.5" x .040"	Light green	Yes
932-364BDG			Yes
932-364UDG	9" x 15.5" x .040"	Dark green	No
Fibre Metal Replacement (only)			
932-4199UCL	9.75" x 19"	Clear	No
932-4199UDG	9.75" x 19"	Dark green	No

Fits the following original equipment manufacturer's headgear

- Huntsman K, K-3, K-4, K-10, C, H, P, & HF.
- Glendale 5000 & 6100 series.
- American Optical H-15.
- Jackson 131, 170SB, 282, 137, 37, 382.
- Also all visors with the Universal hole pattern fit most headgears and cap attachments of Apex, Norton, Bullard, Eastern Safety.



2" x 4.25" filter plates



4.5" x 5.25" filter plates



50 mm filter lens

AWS Guide to Lens Shade Selection

Operation	Arc Current	Shade Minimum	Suggested Shade No.
Shielded Metal Arc Welding (SMAW)			
Less than 3/32" electrodes	Less than 60	7	-
3/32" to 5/32" electrodes	60 - 160	8	10
5/32" to 1/4" electrodes	160 - 250	10	12
More than 1/4" electrodes	250 - 550	11	14
Gas Metal Arc Welding / Flux Cored Arc Welding (GMAW)			
	Less than 60	7	-
	60 - 160	10	11
	160 - 250	10	12
	250 - 500	10	14
Gas Tungsten Arc Welding (GTAW)			
	Less than 50	8	10
	50 - 150	8	12
	150 - 500	10	14
Air Carbon Arc Cutting (CAC-A)			
Light	Less than 500	10	12
Heavy	500 - 1000	11	14
Plasma Arc Welding (PAW)			
	Less than 20	6	6 to 8
	20 - 100	8	10
	100 - 400	10	12
	400 - 800	11	14
Plasma Arc Cutting (PAC)			
	Less than 20	4	4
	20 - 40	5	5
	40 - 60	6	6
	60 - 80	8	8
	80 - 300	8	9
	300 - 400	9	12
	400 - 800	10	14
Torch Blazing (TB)	-	-	3 or 4
Torch Soldering (TS)	-	-	2
Carbon Arc Welding (CAW)	-	-	14

Application Suggestions Based on Plate Thickness

Operation	Plate Thickness		Suggested Shade No.
	Inches	mm	
Oxyfuel Gas Welding (OFW)			
Light	Under 1/8	Under 3	4 or 5
Medium	1/8 to 1/2	3 to 13	5 or 6
Heavy	Over 1/2	Over 13	6 or 8
Oxygen Cutting (OC)			
Light	Less than 1	Under 25	3 or 4
Medium	1 to 6	25 to 150	4 or 5
Heavy	Over 6	Over 150	5 or 6

Replacement Lens Chart

Part No.	Description	Shades
2" x 4.25" Filter Plates		
932-105	Hardened glass - fed. spec.	4 thru 14
932-106	Plastic - fed. spec.	5,6,8 thru 12
932-109	Gold plate - plastic - fed. spec.	8 thru 12
932-248	Gold plate - glass	9 thru 12
932-115	Metal kote silvered glass	8 thru 12, 14
4.5" x 5.25" Filter Plates		
932-107	Hardened glass - fed. spec.	4 thru 14
932-108	Plastic - fed. spec.	9 thru 12
932-110	Gold plate - plastic - fed. spec.	8 thru 12
932-458	Gold plate - glass	9 thru 12
932-117	Metal kote silvered glass	8 thru 14
50 mm Filter Lens		
932-205	Hardened glass - fed. spec.	4 thru 6
2" x 4.25" Clear Cover Lens		
932-1440**	.040 poly carbonate cover plate	Clear
932-740 (932-640)*	50% CR-39 clear plastic	Clear
932-840	100% CR-39 clear plastic	Clear
4.5" x 5.25" Cover Lens		
932-442 (932-942)*	Poly carbonate safety plate	Clear
932-742 (932-642)*	50% CR-39 clear plastic	Clear
932-842	100% CR-39 clear plastic	Clear
50 mm Cover Lens		
932-209	Poly carbonate	Clear
932-210	100% CR-39 clear plastic	Clear
Magnifier Lens***		
932-145	Glass - specify focal power (0.75 thru 3.50)	Clear
932-146	Magna lens - plastic - specify focal power (0.75 thru 2.50)	Clear

* These Items Indicate Personalized Lenses

** Available in bulk.

*** 2.75 diopter not offered in either glass or plastic.

Replacement Lenses

Helmet Model	Outer Lens	Inner Lens (filter)
AT, APC & *APC-V	932-H227	932-H228
XL	932-H327	932-H328
Utility & 9000 series		
9000X & XF	932-H427	932-H428
9000F & V		932-H429

Rainwear

2-Ply Laminated PVC Rain Suit (25 mm)

- 3 piece suit: jacket, pant, hood
- Sold as a complete suit only S-XXXL
- Medium weight suit that wears like a heavier suit.
- Material is very flexible and comfortable with less snag and wear resistance.
- Jacket has detachable hood, raglan shoulders, mesh cape back, and air vents under arms, storm fly front, with non-conductive snap at ankles and wrists.



Part No.	Description
3400-S-XXXL	Rain suit 25 mm 3pc

PVC/Polyester (35 mm)

- Medium weight, PVC coated on a polyester broad loom fabric.
- PVC/polyester material offers good resistance against abrasions, tears and snags, as well as oils, acids and a wide variety of industrial compounds.
- The premium quality PVC used allows suits to stay flexible at cold temperatures.



Part No.	Description
3100-S-XXXL	Rain jacket 35 mm w/ detachable hood
3500-S-XXXL	Rain coat 35 mm 49" w/ detachable hood
3910-S-XXXL	Rain pants w/ bib & snap fly

Part No. 3100
Part No. 3910

Double Coated PVC/Nylon

- This flame resistant suit is made with a nylon scrim material of 210 denier, laminated both sides with PVC.
- Rip-Stop construction allows for light weight comfort while being highly resistant to snags and tears.
- Material remains flexible in cold weather, yet is light weight and comfortable for warmer temperatures. Resistant to most oils, acids, and chemicals.



Part No.	Description
3102-S-XXXL	Rain jacket w/detachable hood
3202	Universal hood w/drawstring
3912-M-XXXL	Rain pants w/bib & snap fly

Part No. 3102
Part No. 3912